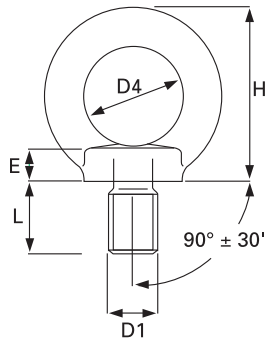


Stainless Steel Eyebolts

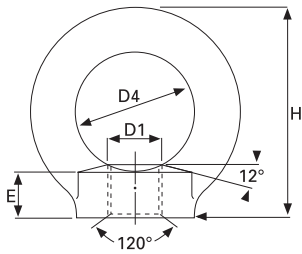
- Material AISI 316.
- Polished finish.
- Generally to DIN 580.



code	D1 (mm)	D4 (mm)	L (mm)	E (mm)	H (mm)	weight (kgs/100)
L1801	6	16	13	6	34	3
L1802	8	20	13	6	36	6
L1803	10	25	17	8	45	10.3
L1804	12	30	20.5	10	53	17.7
L1805	16	35	27	12	62	28

Stainless Steel Eyenuts

- Material AISI 316.
- Polished finish.
- Generally to DIN 582.



code	D1 (mm)	D4 (mm)	E (mm)	H (mm)	weight (kgs/100)
L1901	6	20	8.5	34	4.2
L1902	8	20	8.5	36	5.2
L1903	10	25	10	45	9.4
L1904	12	30	11	53	16
L1905	16	35	13	62	24

NEVER EXCEED MAXIMUM CAPACITY

Ensure operator follows safe use instruction guidelines